

Ferrule - AI-XL 1,5- 8 BK - 3201916

Please be informed that the data shown in this PDF Document is generated from our Online Catalog. Please find the complete data in the user's documentation. Our General Terms of Use for Downloads are valid (<http://phoenixcontact.com/download>)



Ferrule, sleeve length: 8 mm, length: 17.5 mm, color: black


The figure shows a version of the product

Your advantages

- Previous methods of achieving correct conductor insulation are much more time consuming
- These ferrules can be used for short-circuit-proof cables



Key Commercial Data

Packing unit	1 pc
Minimum order quantity	100 pc
GTIN	 4 017918 117368
GTIN	4017918117368
Weight per Piece (excluding packing)	0.240 g
Custom tariff number	85369010
Country of origin	Germany

Technical data

Dimensions

Length (b)	17.5 mm
Maximum stripping length	13 mm
Sleeve length	8 mm
Inner dimension of the insulating collar (d)	7 mm
Ferrule diameter	1.8 mm

Ferrule - AI-XL 1,5- 8 BK - 3201916

Technical data

Dimensions

Insulating collar thickness	0.3 mm
Sleeve wall thickness	0.15 mm

Ambient conditions

Short-term temperature	120 °C
Max. permanent temperature	105 °C (-40°C no load / 0°C dynamic load)

General

Color	black
Components	free from silicone and halogen
Material	CU-DHP
Coating	tin-plated (galvanic)
Conductor category	Stranded conductors, class 2, 5, 6 / B, C, K, M

Standards and Regulations

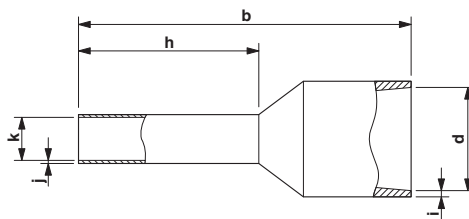
Connection in acc. with standard	CSA
Flammability rating according to UL 94	HB

Environmental Product Compliance

China RoHS	Environmentally friendly use period: unlimited = EFUP-e
	No hazardous substances above threshold values

Drawings

Dimensional drawing



Classifications

eCl@ss

eCl@ss 10.0.1	27400201
eCl@ss 11.0	27400201
eCl@ss 4.0	27060700
eCl@ss 4.1	27060700

Ferrule - AI-XL 1,5- 8 BK - 3201916

Classifications

eCl@ss

eCl@ss 5.0	27400200
eCl@ss 5.1	27400200
eCl@ss 6.0	27400200
eCl@ss 7.0	27400201
eCl@ss 9.0	27400201

ETIM

ETIM 2.0	EC000005
ETIM 3.0	EC000005
ETIM 4.0	EC000005
ETIM 6.0	EC000005
ETIM 7.0	EC000005

UNSPSC

UNSPSC 6.01	30212109
UNSPSC 7.0901	27121703
UNSPSC 11	27121703
UNSPSC 12.01	27121703
UNSPSC 13.2	27121703
UNSPSC 18.0	27121703
UNSPSC 19.0	27121703
UNSPSC 20.0	27121703
UNSPSC 21.0	27121703

Approvals

Approvals

Approvals



CSA / CSAus / cCSAus

Ex Approvals

Approval details

Ferrule - AI-XL 1,5- 8 BK - 3201916

Approvals

CSA		http://www.csagroup.org/services-industries/product-listing/	247397
CSAus		http://www.csagroup.org/services-industries/product-listing/	247397
cCSAus	